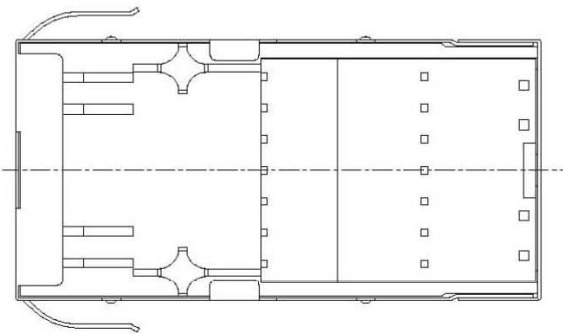


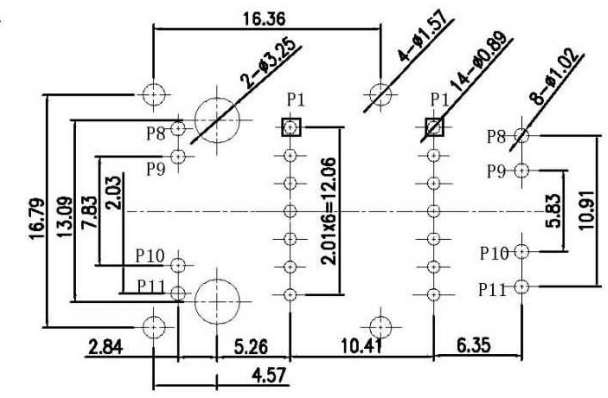
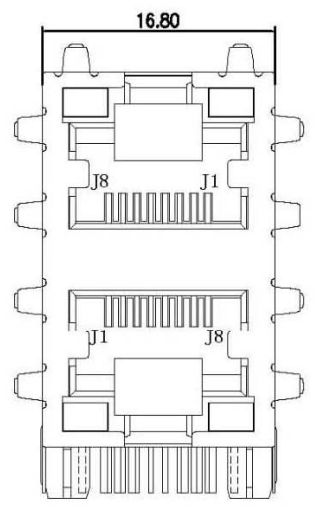
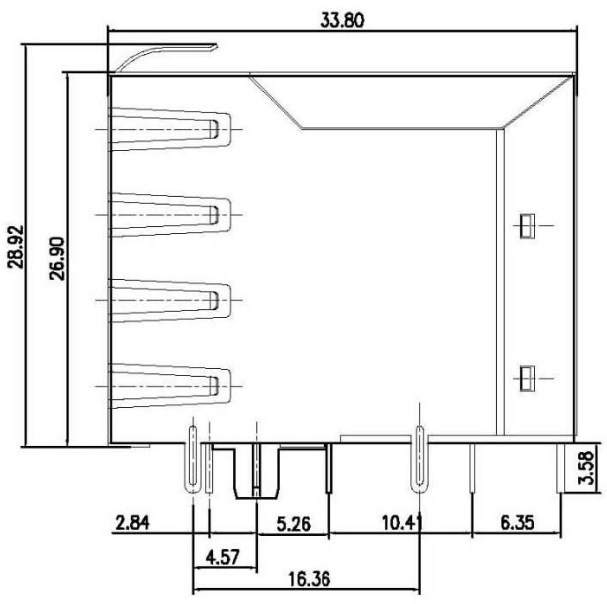
MECHANIC SPECIFICATIONS:



- NOTES:
- CONNECTOR MATERIAL:
HOUSING: THERMOPLASTIC UL94 V-0
CONTACT/SHIELD: COOPER ALLOY
SHIELD PLATING: NICKEL OR TIN
CONTACT PLATING: SELECTIVE GOLD,
50 MICRO-INCHS MIN
30 MICRO-INCHS MIN
15 MICRO-INCHS MIN
6 MICRO-INCHS MIN
3 MICRO-INCHS MIN
IN CONTACT AREA
 - PIN NOT ELECTRICALLY CONNECTED MAYBE OMITTED SEE ELECTRICAL DRAWING FOR OMITTED PINS
 - TOLERANCES COMPLY WITH F. C. C DIMENSION REQUIREMENTS
 - WAVE SOLDER COMPATIBLE-PREHEAT 125 C **DEGREE/90SECS**
 - ALL TOLERANCES NOT OTHERWISE SPECIFIED TO BE $\pm 0.25mm$.

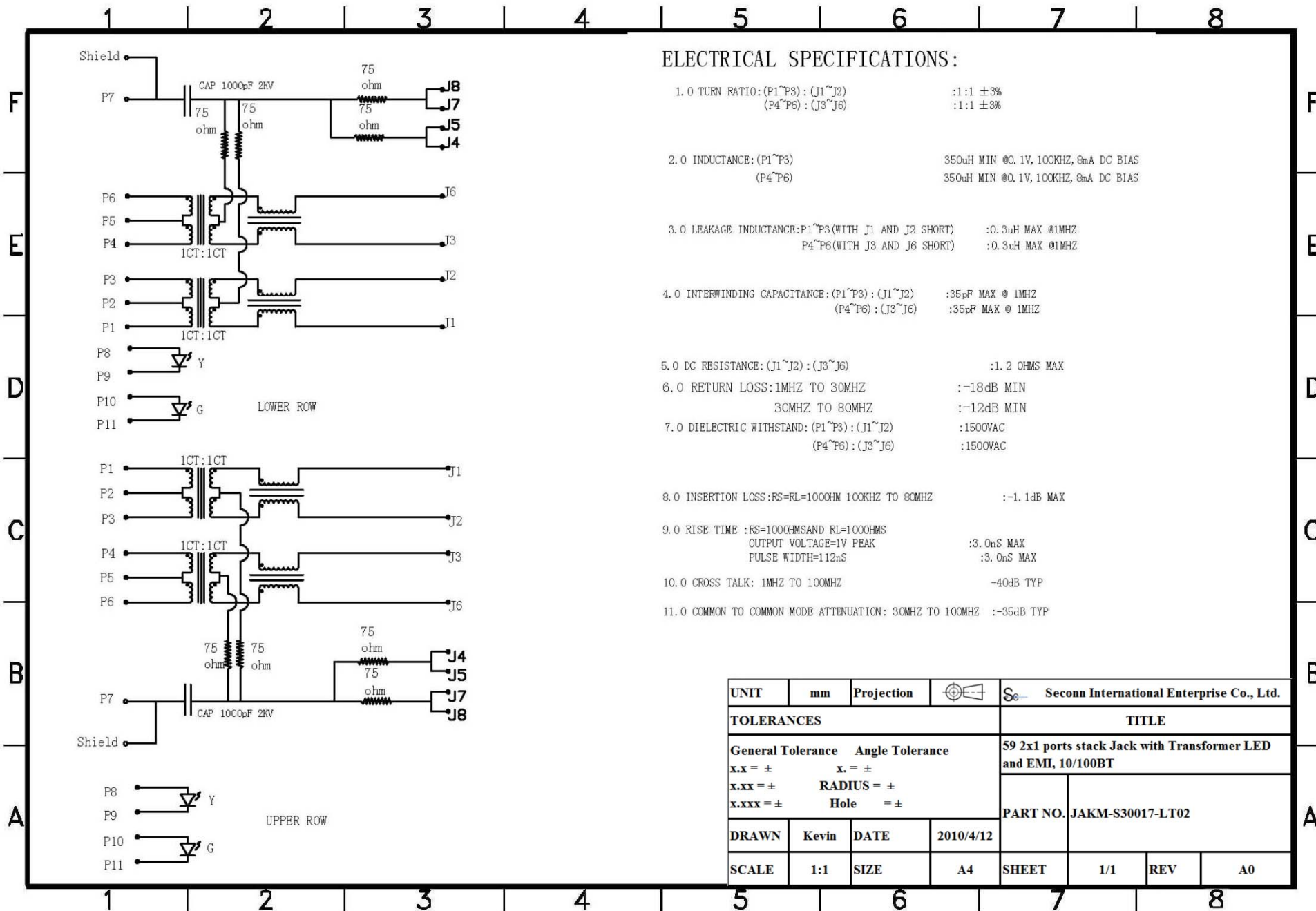
LED SPECIFICATION			
STANDARD LED	WAVELENGTH	Forward V(max)	TYP
GREEN	565nm	2.4V	2.2V
YELLOW	590nm	2.5V	2.1V

*WITH A FORWARD CURRENT OF 20mA



P. C. B. RECOMMENDED HOLE LAYOUT SEEN FROM COMPONENT SIDE.
ALL CENTERLINE DIMENSIONS ARE BASIC

UNIT	mm	Projection		Secon International Enterprise Co., Ltd.			
TOLERANCES				TITLE			
General Tolerance		Angle Tolerance		59 2x1 ports stack Jack with Transformer LED and EMI, 10/100BT			
x.x = ±		x. = ±					
x.xx = ±		RADIUS = ±					
x.xxx = ±		Hole = ±		PART NO. JAKM-S30017-LT02			
DRAWN	Kevin	DATE	2010/4/12				
SCALE	1:1	SIZE	A4	SHEET	1/1	REV	A0



ELECTRICAL SPECIFICATIONS:

- 1.0 TURN RATIO: (P1~P3) : (J1~J2) : 1:1 ±3%
(P4~P6) : (J3~J6) : 1:1 ±3%
- 2.0 INDUCTANCE: (P1~P3) : 350uH MIN @0.1V, 100KHZ, 8mA DC BIAS
(P4~P6) : 350uH MIN @0.1V, 100KHZ, 8mA DC BIAS
- 3.0 LEAKAGE INDUCTANCE: P1~P3 (WITH J1 AND J2 SHORT) : 0.3uH MAX @1MHZ
P4~P6 (WITH J3 AND J6 SHORT) : 0.3uH MAX @1MHZ
- 4.0 INTERWINDING CAPACITANCE: (P1~P3) : (J1~J2) : 35pF MAX @ 1MHZ
(P4~P6) : (J3~J6) : 35pF MAX @ 1MHZ
- 5.0 DC RESISTANCE: (J1~J2) : (J3~J6) : 1.2 OHMS MAX
- 6.0 RETURN LOSS: 1MHZ TO 30MHZ : -18dB MIN
30MHZ TO 80MHZ : -12dB MIN
- 7.0 DIELECTRIC WITHSTAND: (P1~P3) : (J1~J2) : 1500VAC
(P4~P6) : (J3~J6) : 1500VAC
- 8.0 INSERTION LOSS: FS=RL=100OHM 100KHZ TO 80MHZ : -1.1dB MAX
- 9.0 RISE TIME : FS=100OHMS AND RL=100OHMS : 3.0nS MAX
OUTPUT VOLTAGE=1V PEAK : 3.0nS MAX
PULSE WIDTH=112nS : 3.0nS MAX
- 10.0 CROSS TALK: 1MHZ TO 100MHZ : -40dB TYP
- 11.0 COMMON TO COMMON MODE ATTENUATION: 30MHZ TO 100MHZ : -35dB TYP

UNIT	mm	Projection		Secon International Enterprise Co., Ltd.			
TOLERANCES				TITLE			
General Tolerance				59 2x1 ports stack Jack with Transformer LED and EMI, 10/100BT			
x.x = ±				x. = ±			
x.xx = ±				RADIUS = ±			
x.xxx = ±				Hole = ±			
PART NO.				JAKM-S30017-LT02			
DRAWN	Kevin	DATE	2010/4/12				
SCALE	1:1	SIZE	A4	SHEET	1/1	REV	A0